



# The Teesdale Worm

Magazine of the Darlington and Teesdale Circuit

Issue 20 - October 2022

Ephesians 3:17-19 reminds us:

*'And I pray that you, being rooted and established in love, may have power, together with all the Lord's holy people, to grasp how wide and long and high and deep is the love of Christ, and to know this love that surpasses knowledge—that you may be filled to the measure of all the fullness of God.'*



I have a love/hate relationship with water and water slides. I have never gone deep sea or river diving. I usually fear water and the sea. ("Just the feet" is my approach, especially in the cold waters of England!)

I also confess I am not a great swimmer. Ask my kids, they will gladly tell you about a time when I nearly drowned while holding onto Emily at a water park at Warm baths, South Africa. Or the time when I literally flew out of what is supposed to be a gentle cascading water slide coming to a stop with people gasping in horror and me trying desperately to pull the shorts out of my rear end. Not a great sight!

So, when it comes to water, shallow is preferable. "Don't go deep" is my motto. I wonder if my own self-preservation motto above has somehow flowed into my spiritual and church life.

Don't go deep.

Don't make room and space for God to work in our services. Don't try to reach the heights nor plumb the depths of the love of God in our own lives. Don't make room to rest in the healing love of Christ.

I wonder if I am scared to go too deep with the Lord?

Maybe I prefer to just dip my toe, stay on the edge, don't dive in. A little afraid of what it means to become immersed and baptized again in the love, grace, joy and hope of God. I have a suspicion we don't really fully allow ourselves and others to explore the depth the love of God.

My lecturer always reminded me as a young student: The brightest light shines brightest at home. In other words, opening ourselves more to God's love starts not out there in others, but begins in me. When I begin to let go, and submit, and pray for the overwhelming life altering love of God again to be experienced in my own life, and in my own family, and in my own church.

Where we begin to explore and embrace as a Circuit just how wide and long and high and deep is the love of Christ. And this starts with me.

Just please don't invite me to any more water parks!

Rev Brian Hutton



## TELEPHONE SERVICE

*You are welcome!*

You may have seen the telephone service listed on the Plan and wondered what it was?

This started out as worship during the pandemic for Staindrop Church. By word of mouth, it included people from with the Circuit and beyond. When the Darlington and Teesdale Circuit came into being, it was suggested that the telephone service be a Circuit resource.

The telephone service meets the needs of those often forgotten. The housebound, those who were ill for short periods of time, those with long term illnesses which stop them from attending worship in a building, carers, those who relied on others for transport to worship, all found their needs were being met.

It has created space for Local Preachers who cannot travel to have a voice and the opportunity for potential Local Preachers to try leading worship under the supervision of an accredited Local Preacher. The dial in service is more than a transactional process in response to closed buildings. It has become a transformative community.

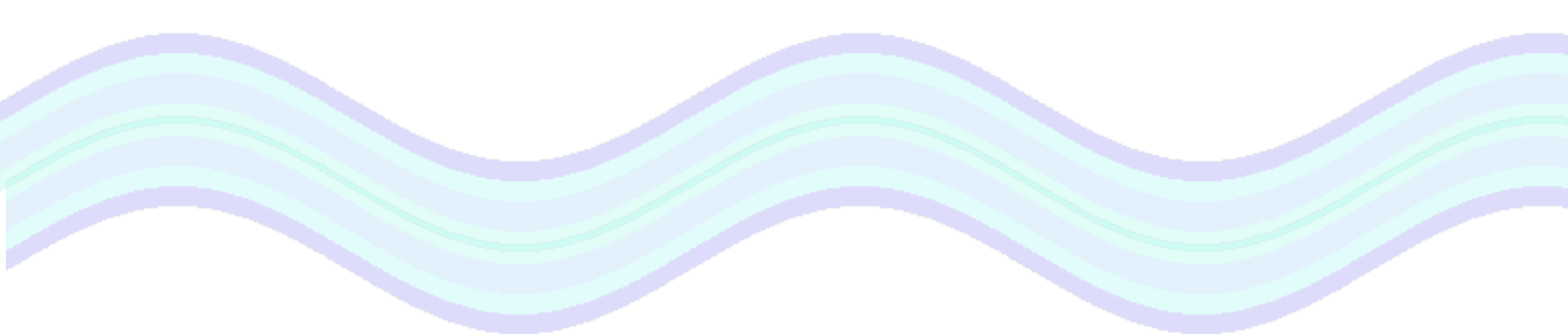
- The service starts at 9am.
- It lasts no more than 40 minutes.
- Hymns are usually sung unaccompanied.
- There is opportunity for participation, through readings, prayers, and discussions.
- All the above enables the service to be inclusive and not just one person's voice.

For those who wish to join in this service, if you have an email address you can be added to the mailing out list to receive an order of service. For those without a computer, we are going to set up a 'network' to get a printed copy for you.

I hope you feel you can try worship with this dial in community. It is important you feel okay with this framework and different way of working. If you try it out and find it's not for you, that's fine. If you need a worshipping community for one Sunday, a few weeks or for whatever reason, they you are welcome.

If you have any questions about the dial in worship service, please contact Mark Bagnall on 07856 255 805 or email: [markatstaindropmethodists@gmail.com](mailto:markatstaindropmethodists@gmail.com)

*Mark Bagnall  
Staindrop*



## News from Elm Ridge

We celebrated Harvest at Elm Ridge on the weekend of 24th/25th, September.

Saturday started with a free pie and peas supper with a fun quiz, attended by forty people. There was a nail-biting finish, with a tie for second place, so a tie-breaker had to be found.

All our efforts for the weekend were concentrating on the environment, and proceeds were to be donated to the food bank at The Well. People very generously donated over £100 on the Saturday evening.



On Sunday morning Rev. John Howard conducted our service. The church looked absolutely beautiful, and sincere thanks must go to Sue Colley and her team of ladies for the wonderful floral decorations. The service was very well attended, with the uniformed organisations joining with us. John invited two of the young people to help in a short drama, which went very well. We had asked for non-perishable gifts and we had a laden table and a very full wheelbarrow.

At the close of the service we held a retiring collection for The Well, and were delighted to receive nearly £200. All the gifts were taken to The Well and were very gratefully received.

All in all, a very successful weekend.

*Linda Gallop  
Steward*

## Harrowgate Hill

Like many others we were all shocked at the news of the death of Queen Elizabeth II and decided we would like to do something to enable our congregation to express their feelings. A book of condolences was made available for all to write something and the 3rd Darlington Girls Brigade all wrote a prayer. These were all then uploaded on to the Royal Family website by Brian Simpson.

Our coffee mornings on the 1st and 3rd Saturdays of the month are continuing to be well attended and it is encouraging to see the fellowship growing. On October 15th we are having our usual Birthday coffee morning but following that we are having soup/pie/peas lunch for Church funds. Our December coffee morning on 1st December will have a Christmas theme to it with extra tables selling various items to buy. We are also arranging to have an afternoon tea on 26th November the proceeds of which will be sent to Christian Aid.

*Blessings  
Harrowgate Hill Stewards*

# THE ENCOUNTER PROGRAMME

For about ten years or more, the Methodist Church has been offering the *Encounter* programme as a supportive small group environment for exploring how we may extend our discipleship and explore what is God is calling us to. It is open to people of all ages and the group meets monthly over the course of a year.

When I retired from Circuit ministry, the deepest question that I had to address was 'What is God calling me to in the next phase of my discipleship?' To help me with this question, I signed up for the *Encounter* programme that was being run in Durham in 2015. Part of the answer given to me was to become part of the team delivering the *Encounter* programme!

In the following years, we delivered the programme in Durham and in Middlesbrough. In early 2020, we were about to launch the programme in Durham. With the onset of Lockdown, we immediately began to set up an online group to share the programme via Zoom. The bonus of an online course has been that we have been able to draw together people from all over the country.

*Encounter* is described as a place to deepen your awareness of God, an opportunity to reflect on your faith journey in a supportive small group environment for sharing and learning together. A new series of *Encounter* is being offered, beginning in January 2023. There are a couple of taster evenings on 28th November and 8th December.

More information can be found on the Methodist website at:

[www.methodist.org.uk/for-churches/vocations/discerning-vocation/connexional-vocation-exploration-opportunities/encounter/](http://www.methodist.org.uk/for-churches/vocations/discerning-vocation/connexional-vocation-exploration-opportunities/encounter/)

I am also available to have a conversation with anyone who may be interested.

Alan Coustick  
([alan.coustick@methodist.org.uk](mailto:alan.coustick@methodist.org.uk))  
01833 908604

A poster for the 'Encounter 2023' programme. It features a teal and yellow wavy design. At the top left is a red cross logo. The main title 'ENCOUNTER 2023' is in large teal letters, followed by 'a Methodist exploration of discipleship & vocation' in orange. Below this are several questions in teal: 'Ever wondered what God is calling you to?' and 'Would you like to have a greater impact as a Christian disciple?'. A red banner says 'Make 2023 the year in which you join with others to explore your gifts and faith'. A yellow circle contains a quote: '"Encounter gave me a better understanding of myself in relation to God and my life's path." Alison, Lambeth Circuit'. To the right, under 'Encounter is...', it describes the programme as a place to deepen awareness of God, reflect on faith journey, and share in a supportive group. It states 'starts January 2023 ~ ends November 2023'. At the bottom, it says 'To find out more visit methodist.org.uk/encounter' and 'Taster evenings: 28 November and 8 December'. The footer features the 'The Methodist Church Learning Network' logo with a red cross icon.

**ENCOUNTER 2023**  
a Methodist exploration of  
discipleship & vocation

Ever wondered what God is calling you to?  
Would you like to have a greater impact as a Christian disciple?

Make 2023 the year in which you join  
with others to explore your gifts and faith

"Encounter  
gave me a better  
understanding  
of myself in  
relation to God  
and my life's path."  
Alison, Lambeth Circuit

Encounter is...  
a place to deepen your awareness of God  
an opportunity to reflect on your faith journey  
a supportive small group environment  
for sharing and learning together

starts January 2023 ~  
ends November 2023

To find out more visit  
[methodist.org.uk/encounter](http://methodist.org.uk/encounter)

Taster evenings: 28 November  
and 8 December

 The Methodist Church  
Learning Network



## 'Dial in thoughts'

An inspired idea, especially but not exclusively during lockdown. People like me who were shielding - imagine how isolating that felt and living alone too - over and above even the restrictions placed on others.

I felt privileged - I have so much space, both inside my home and outside- that others didn't have. So I was extremely blessed and I thanked the Lord each day for the 'freedom' that gave me. However, not seeing anyone face to face, very quickly took its toll, and I missed talking with folks.

I was overjoyed when I heard about the Dial-In arrangement - I think I had barely tried Zoom at that time - or maybe once or twice unsuccessfully. But Dial-In was magic. I didn't have to put a 'face-on' .....prepare myself to meet others; I could be myself and most importantly, concentrate on worshipping the Lord.

What a gripping 30 minutes it turned out to be. Week by week I became more familiar with the voices - many of whom, luckily, I knew beforehand, but it became a joy to hear those same voices week by week. I have become increasingly excited about the opportunity for others to join - especially non-church goers. What a gift for those curious about church, and worship, who hitherto had not found the 'courage' to walk into a church.

That aspect has been a bit disappointing; I think it needs greater publicity, describing how easy it is to join, how freeing it is - one can be anonymous even. An inspiring way to plant a new church! Isn't that what churches and Circuits are about?

I think what excites me most is the opportunity for anyone and everyone to contribute to the worship - even giving the message. Is it not the case that with an acknowledged trained leader in place, all can be free to share their thoughts and the congregation can be protected from any inappropriate ideas, if need be.

The sound quality on the telephone can be a little difficult! And trying to sing a hymn, as a group,.....well! But we love it. We have learned not to listen too closely to the finished article, but simply put our worshipping hearts into it, and it's lovely!

No, we're not shielding anymore but a number of people, like myself, find it a real challenge to get to our local church for one reason or another, by 10.30 or so. Long may the Dial-In service continue.

*Janet Stark  
The Pathway*



'May you find friends who accept you for who you are and love you enough to walk with you into what you can become. May you never have to apologise for your fragility or questions. May you remember that faith is most needed when felt least. Sadness is not defeat'.  
#Niteblessing

## ***I Will Help You***

It was the hottest day of the year when we went to the Bible reading at the Keswick Convention in Southey Street Methodist Church. I was vainly trying to fan myself with a piece of paper, when a lady sitting behind us leaned forward and offered me a paperback book to do the job. The title of the book was “*I will help You*”, and it did, not just cooling me down, but giving me a huge spiritual boost. How did Irene Rowley (the author) know that I was recovering from a dose of covid, and still felt weak and anxious. She didn’t, but the Lord did, and prompted her to give me not just the book but the very Word, “I will help you” which is from Isaiah 41 vi3.

It is a book of poems and the first one is this:-

Will You help me, Lord,  
When I’m tired and afraid;  
When I cannot sleep at night  
And my problems seem outweighed?

Will You help me Lord  
When strange things happen to me;  
Things I never experienced before  
And I feel old, can’t you see?

Will You help me, Lord  
When things start going wrong?  
In my earthly circumstance  
Could I possibly have a song?

Will You help me Lord  
When I need to face things new,  
When things are starting to happen,  
Come at me out of the blue?

Yes Lord! You will help me  
As I walk throughout this life;  
Whatever comes, I can depend on You  
To lift me from my strife.

Needless to say He has helped, numberless times in the past, as well as that week, and will continue to do so until the end of my days, because He has promised. I just need reminding sometimes!

*Jean Bartle*



## Cost of Living crisis

With the current climate in mind, we have pulled together information that you may find helpful. Please check the details yourself before attending any of these - just in case the details have changed since printing.



**Darlington Borough Council**

1 h · 🌐



### Have you signed up with The Bread and Butter Thing yet?

Day	Hub	Collection Time	Collection Point
Monday	Elim Church	2.15pm	Elim Church, Bowman Street (Harrowgate Hill)
Tuesday	Skerne Park	11.30am	Skerne Park Youth & Community Centre
Tuesday	Cockerton Club	1.30pm	Cockerton Club, Cockerton Village
Wednesday	The Well	1:30pm	The Well Methodist Church, North Road
Wednesday	Corporation Road	2.15pm	Corporation Road Primary School
Thursday	Red Hall	1.30pm	Red Hall Primary School
Thursday	Eastbourne	2.00pm	Eastbourne Community Hub in Eastbourne Park
Friday	Firthmoor	1.30pm	Firthmoor Community Centre

The Bread and Butter Thing is open to all residents and there is no criteria for anyone to use the service. Simply follow the instructions below to register, the first week is free for all new registrations. Existing customers can also move hubs dependent on the best location for them.

**It's really easy to sign up to TBBT...**



**Step 1** - Send us a text to **07537416040** with your full name, your postcode and the name of your hub (Elim, Skerne Park, Cockerton, etc) and we will get in touch.



**Step 2** - Select the size of order you want to receive. A typical family order would be £7.50, an individual would be £4. An extra large family would be £15.

**Step 3** - We'll send you a text every week to see if you want an order. All you have to do is reply "YES" to the text by 10am the day before collection and we'll deliver your order to your chosen hub.



# FOOD BANKS AND LUNCH CLUBS IN THE TEESDALE AREA

## FOOD BANKS:

### Trussel Trust

The main collection point for Teesdale for the Trussel Trust is The Well, West Auckland. Donations from the following are delivered there for distribution:

**Barnard Castle:** Barnard Castle Methodist Church; St Mary's Anglican Church; Heron Foods supermarket.

**Middleton in Teesdale:** The Pathway; The Co-op; UTASS

**Staindrop:** approximately every six weeks Mark Bagnall advertises a collection in the village and then collects and delivers the donations.

**Storehouse Food Bank:** run by Influence Church using Barnard Castle Methodist Church premises, The Witham being their collection point

TCR Hub runs the Teesdale Care Package Campaign. Through the FareShare scheme local supermarkets inform TCR of any surplus fresh food, volunteers pick up and pack this food and it is then advertised on Facebook for residents in the Barnard Castle area to collect from the Hub. The TCR also has a Care Pack whereby donations are deposited at Lidl, Morrisons and Tesco and TCR volunteers collect, pack and distribute to vulnerable residents throughout the Dale. Referrals are made by Social Services, the Police etc or by self-referral.

## LUNCH CLUBS:

The Association of Teesdale Day Clubs provides support to mostly, but not exclusively, elderly residents in Teesdale villages to combat isolation, improve health and wellbeing, and to provide a source of information and support. Clubs meet regularly, usually on a weekly basis and normally from 11.30-2pm.

Members pay £6 for a 3 course lunch cooked on the premises by a qualified Chef. All of the premises used have wheelchair access, either level or ramps and member transport can usually be arranged.

### Club Days and Times:

Clubs meet regularly, usually on a weekly basis and normally from 11.30-2pm. Meetings take place at the following venues:

Barnard Castle Cricket Club, every Tuesday from 11:30-2pm.

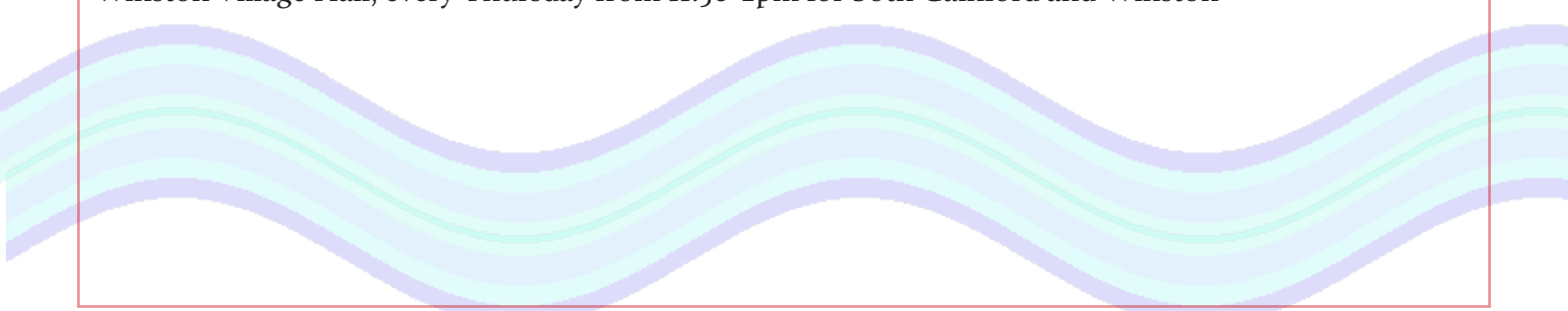
Cotherstone Village Hall, every Wednesday from 11:30-2pm.

Mickleton Village Hall every Thursday from 11:30-2pm.

Middleton-in-Teesdale every Wednesday in the Masonic Hall except the third one in the month which is at the Pathway Middleton-in-Teesdale from 11:30-2pm.

Staindrop Scarth Hall, every Tuesday from 11:30-2pm.

Winston Village Hall, every Thursday from 11:30-2pm for both Gainford and Winston



## Foodbanks and other helpful organisations in Darlington

- King's Church Foodbank - Whessoe Road. Monday, Wednesday and Friday, 1-3pm
- St. Mary's Community Centre – Cockerton. Thursday, 1-3pm
- St. Columba Church – Clifton Road. Friday, 11am – 12pm
- Salvation Army Citadel – Thompson St East Friday 5.30-7pm
- Darlington Baptist Church – Grange Road . Monday, Tuesday, Thursday and Friday 10-12:30pm
- Word of Life Christian Centre – Corporation Road. Saturday, 11:30-1pm
- Firthmoor and District Community Centre – Burnside Road. Monday-Friday 9-4pm

### Monday:

10-12:30pm Darlington Baptist Church\* : Grange Road, DL1 5NH Tel: 01325 360449  
1-3pm Kings Church Foodbank\* : Kings' Centre, Whessoe Road, DL3 0QT Tel: 01325 469884  
9-4pm Firthmoor & District Community Association, Burnside Road, Darlington DL1 4SU  
Tel: 01325 462979

### Tuesday:

10-12:30pm Darlington Baptist Church\* : Grange Road, DL1 5NH Tel: 01325 360449  
9-4pm Firthmoor & District Community Association, Burnside Road, Darlington DL1 4SU  
Tel: 01325 462979

### Wednesday:

1-3pm Kings Church Foodbank\* : Kings' Centre, Whessoe Road, DL3 0QT Tel: 01325 469884  
9-4pm Firthmoor & District Community Association, Burnside Road, Darlington DL1 4SU  
Tel: 01325 462979

### Thursday:

10-12:30pm Darlington Baptist Church\* : Grange Road, DL1 5NH Tel: 01325 360449  
1:30-2:30pm St Andrew's Foodbank\* : St Andrew's Church Hall, Haughton Green, DL1 2DD  
1-3pm St Mary's Community Centre\* : Newton Lane, Cockerton, DL3 9EX  
9-4pm Firthmoor & District Community Association, Burnside Road, Darlington DL1 4SU  
Tel: 01325 462979

### Friday:

1-3pm Kings Church Foodbank\* : Kings' Centre, Whessoe Road, DL3 0QT Tel: 01325 469884  
11-12pm St Columba's Foodbank\* : St Columbia's Church, Clifton Avenue, DL1 5EE  
5:30-7pm Salvation Army\* : Citadel, Thompson Street East, Darlington DL1 3EW Tel: 01325 380994  
9-4pm Firthmoor & District Community Association, Burnside Road, Darlington DL1 4SU  
Tel: 01325 462979

### Saturday:

11:30-1pm The Word of Life Church, Christian Centre Corporation Road DL3 6AS Tel: 07788 844226

\*some form of ID Needed



“That Bread & Butter Thing” – food from High Street Supermarkets is given to Community Hubs in this town where it is packed and collected by Members from the hubs. Typical value is £35 but members pay £7.50 for 3 bags – fruit/veg, fridge items and cupboard items.

Sign up by sending a text to 07537 416040, sending and email to [hello@breadandbutterthing.org](mailto:hello@breadandbutterthing.org) or filling the form on their website [www.breadandbutterthing.org/members](http://www.breadandbutterthing.org/members)

Hubs are based at Harrowgate Hill Primary School, Skerne Park Community Centre, Eastbourne park Community Hub, Windsor Court, Corporation Road Primary School, Red Hall Primary School and Firthmoor Community Centre

**Also available:**

- Mon 10:00 – 11:30 Grange Road Baptist Church – Food Bank  
12:15 – 13:15 Grange Road Baptist Church – Soup Kitchen  
18:00 King’s van, Skippers Car Park, St Cuthbert’s Way
- Tue 08:00 – 19:00 Firthmoor Community Centre, Burnside Road  
10:00 – 11:30 Grange Road Baptist Church – Food Bank  
12:15 – 13:15 Grange Road Baptist Church – Soup Kitchen
- Wed 08:00 – 19:00 Firthmoor Community Centre, Burnside Road  
13:00 – 15:00 King’s Centre, Whessoe Road
- Thur 08:00 – 19:00 Firthmoor Community Centre, Burnside Road  
10:00 – 11:30 Grange Road Baptist Church – Food Bank  
12:15 – 13:15 Grange Road Baptist Church – Soup Kitchen  
13:00 – 15:00 St Mary’s Community Centre, Stoopersdale Ave  
13:30 – 14:30 St Andrew’s Church, Salters Lane  
18:00 Help Link Van, Skippers Car Park, St Cuthbert’s Way
- Fri 08:00 – 19:00 Firthmoor Community Centre, Burnside Road  
11:00 – 12:00 St Columba’s, Clifton Road  
13:00 – 15:00 King’s Centre, Whessoe Road  
17:30 – 19:00 Salvation Army Citadel, Thompson Street East
- Sat 11:30 – 13:00 Word of Life, Christian Centre, Barningham Street
- Sun 18:00 Church Van, Skippers Car Park, St Cuthbert’s Way

***NOTE: The Circuit is not responsible for any information that isn’t correct - please check out the details before you act on any of the details above.***



# What is Wave Church?

Haughton Church are about to embark on a new venture - WAVE Church. The new WAVE Church will be held at 3pm on every 4th Sunday of the month starting on Sunday, 23rd October. This is an exciting new development for Haughton! We have a good team of volunteers, some of whom have undertaken a first training session in a Makaton course in order to help during the services. An initial practice service took place which went down very well and we have had some very good feedback.

During the Service we use a visual timetable which is explained at the beginning of the session, it is a short simple service with songs signed in Makaton as well as projected onto a screen. There is drama, craft and art activities and very importantly coffee and cake - a very essential part of the fellowship and sharing together. The whole service is simple, interactive and joyous.

Some of the Feedback we have received:

Great idea!

Warm and inviting, and interactive ...

Enjoyed the tea and cake

Sunday's service was really different, and quite exciting!

So, what is WAVE?

WAVE stands for We're All Valued Equally. This drives everything we do. We like that our work can be summed up in the two meanings of the word 'wave', a universal sign of friendship and a powerful force that can break down barriers. WAVE for Change is about encouraging and enabling mixed-ability friendships. We want to see more people with and without learning disabilities mixing and having fun together in the heart of our communities.

**'With' Not For:** The WAVE approach is that everyone should have the chance to join in with community life and be valued equally. We avoid terms like 'service users' or 'volunteers'. For us it's all about doing things with and not for each other. When we do this, everyone benefits:

- Understanding and acceptance of people's 'differences' improves
- Confidence grows
- Anxiety reduces
- Friendships are built

**In faith & love:** we start from a place of belief that we are all valued equally by God. We value and respect everyone in the way we talk, listen to and treat them.

**Having fun:** we try to make sure that people enjoy doing stuff together, whether as a participant in activities and events, or as a staff/team member.

**Inclusively:** we want to improve understanding and interactions between people with and without learning disabilities. Those with learning disabilities are welcomed as valued and active members of our teams and activities, not service users or beneficiaries. Those without learning disabilities are welcomed to join in with our mixed-ability events as equally valued participants, not as volunteers to help those who are less fortunate.

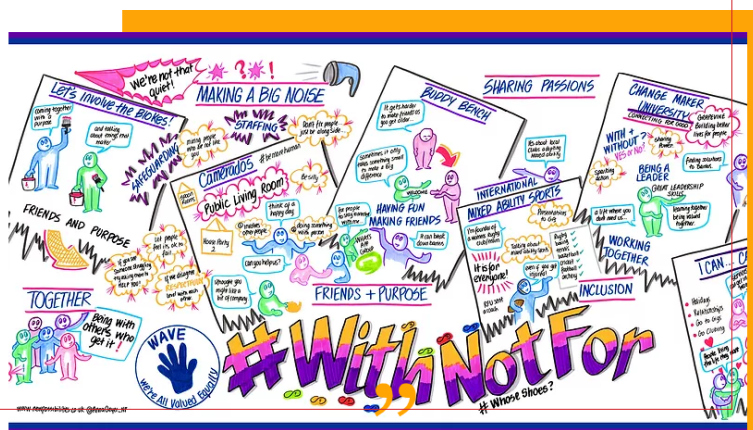
**Simply:** we try to keep all that we do and say as simple as possible, so that it is easy for people to understand and can easily join in.

**Creatively:** we encourage new ideas and different ways of working; we use all forms of creative activity (music; art; craft; food; spoken word; drama etc.) to encourage people with and without learning disabilities to comfortably mix and learn from each other.

**Safely:** we follow health and safety rules; have policies in place to protect the vulnerable among us; have necessary insurance cover; handle personal information as required by privacy laws.

What can you do?

Please pray for this new venture and let anybody know who you think will benefit from it!



## Eggleston Show 2022

The 146th Annual Eggleston Show was another outstanding success - and once again members from the dale's Methodist churches, were part of the Upper Teesdale Churches Together team celebrating the work of God up and down the dale and our place in its many communities.

With the biggest entry across all classes in the show's history, and blessed with fine weather, the event attracted thousands of visitors from across the region and beyond. And, thanks to the good offices of the show organisers, our 'Church In The Dale' stand was positioned right at the heart of all the action, overlooking the main show ring.

We decided to re-visit our theme from last year - *"Wonderfully and beautifully made"* - but use it this time to celebrate the beauty of the wonderful dale in which we live by asking for help to create a piece of public art.

Scores of boys, girls, mams and dads - and even some of our local constabulary - visited our stand over the course of the day and, using scraps of paper, card, felt, fabric, foil, wool (and lots and lots of glue!), they succeeded in creating a colourful and vibrant panorama which truly celebrates Upper Teesdale.

The finished artwork is now on display at The Pathway Methodist Church, in Middleton-in-Teesdale, but we hope to show it in other venues over the autumn.

The stand was staffed by clergy and volunteers from several of the dale's churches. Afterwards, UTCT chair Mary Howard said: "A huge thank you to all who helped make our stand at Eggleston Show such a success. There was a huge buzz around the artwork, and plenty of opportunity to engage with the community."

*Peter Collins  
The Pathway*



Deadline for items for the November/December issue is: Monday, 31st October  
Please send to [admin@dandtcircuit.org.uk](mailto:admin@dandtcircuit.org.uk) or  
Circuit Office, c/o Elm Ridge Methodist Church, Carmel Road South, Darlington. DL3 8DJ  
Thank you!

Bric a brac



Crafts

## CHRISTMAS FAYRE

Cakes

At

COCKERTON METHODIST  
CHURCH

On

Saturday November 12th

10 - 12.30pm

variety of stalls and  
refreshments

Body Shop

Jewellery

Refreshments



## Elm Ridge Christmas Fair



supporting MHA

10am until 12.30pm

Saturday 19<sup>th</sup> November

£2 entry per person includes  
refreshments

Crafts, Cakes, Christmas  
gifts

Elm Ridge Methodist Church Hall,  
Carmel Road South, Darlington



# MWiB Autumn Day

14th October 2022



at Guisborough Methodist Church

## Worship and Induction of Pamela Stenson as District MWiB President at 11am

Refreshments from 10.15am

Afternoon session 2-4pm

(Please bring a packed lunch)

All-day car-parking available for £2 at Belmont View Care Home,  
Fountains Place, Guisborough TS14 7JA

(approx. 5 mins walk away)

## A Volunteer Treasurer Needed

We are a small local charity, founded in 1838, with an annual income circa £25,000. Darlington Town Mission's vision is to reduce isolation and provide companionship for elderly people within the Borough of Darlington, focusing on the over 80's. We employ two part-time Missioners and have a small team of volunteer visitors/drivers to support their work. At present we have capacity for up to 75 Friends in our care.

Our current volunteer Treasurer will be retiring shortly, and we are looking for a replacement to join our board of Trustees and take over this role. The role would suit someone with experience in an accountancy, book-keeping, or other financial settings.

It is an important role which will require time and commitment. The Treasurer may spend approximately four days per month fulfilling their responsibilities.

The post holder would need to be proficient with the use of Excel spreadsheets, Word, and email systems.

If you are interested in helping Darlington Town Mission in this capacity, or know someone that might like the details, please contact us for an application form and a Role Description.

We would be delighted to hear from you.

### Brian Simpson

DTM Secretary and Vice-Chair  
[dtm@darlingtontownmission.org.uk](mailto:dtm@darlingtontownmission.org.uk)

**Darlington Town Mission**  
Tel 0794 3251357  
Founded 1838

Registered Office - 2 Davison Road, Darlington, Co Durham DL1 3DR

Reg. Charity Number: 235572

'We aim to provide relief from isolation and loneliness in the elderly by visiting, providing social contact and Christian Fellowship.'

[www.darlingtontownmission.org.uk](http://www.darlingtontownmission.org.uk)

## WANTED – Missioner 28 Hours per week Commencing January 2023

We are a small local Christian based charity, founded in 1838, whose vision is to reduce isolation and provide companionship for elderly people, focusing on the over eighties within Darlington Borough. We do this by visiting them and by giving them the opportunity to participate in a programme of outings and events. We serve people of all faiths and none.

Due to retirement of the current post-holder, we need someone with a genuine interest in, and understanding of, the needs of older people. This person must have excellent interpersonal skills and the duties include home visits, coordinating a programme of monthly outings, recruitment and cooperation with volunteers and contribution to other events.

Annual salary £13,832 subject to government National Living Wage increases.

For an application form, job description, person spec. charity information etc., please contact:

Mr. Brian Simpson  
DTM Vice-Chair  
Telephone 01325 264145

Closing date for receipt of application forms - **30<sup>th</sup> November 2022**

DTM founded 1838  
Registered Office - 2 Davison Road, Darlington, Co Durham DL1 3DR  
Tel 0794 3251357  
Reg. Charity Number: 235572  
'We aim to provide relief from isolation and loneliness in the elderly by visiting, providing social contact and Christian Fellowship.'  
[www.darlingtontownmission.org.uk](http://www.darlingtontownmission.org.uk)

'Jesus Christ lived obscurely most of his life and never travelled far. He was maligned and rejected by many, though He had done no wrong. And yet, billions of people now follow His teaching and find in Him the guiding light for their lives. I am one of them'.

Queen Elizabeth II



## Respond to the energy crisis this winter

If you live in the UK and you're responsible for paying household bills, you'll be aware that energy bills are skyrocketing. People's gas and electric bills are doubling and tripling, with more price hikes on the horizon. As is always the case, this will affect people on the lowest incomes the most. Some people will have no choice but to be cold this winter.

Many community groups, including churches, have started making plans to offer 'warm spaces' this winter: places where people can come and get warm, have a free hot drink, maybe grab a snack and charge their phone. This page offers guidance for going about setting up a warm space safely and in a way that is most helpful to your community.

Christians believe that everyone should be able to live with dignity, knowing their intrinsic worth and value. Poverty contradicts the will of God, and robs people of their dignity, sense of worth and value. Providing a warm space must be a temporary response, alongside campaigning for people to live with dignity, which includes having a warm space in their own home.

If you plan to offer a warm space, please sign up at [www.warmwelcome.uk](http://www.warmwelcome.uk).

## There is Room (Advent and Christmas 2022) resources

**There is Room** is our 2022 Advent and Christmas campaign. It seeks to demonstrate the Methodist Church as an open, welcoming and inclusive place for all. Through the lens of a *Methodist Way of Life*, it will offer content relevant for today's world, aiming to encourage and support anyone who wants to find out more about Christian faith and the Methodist Church.

*'And she gave birth to her firstborn son and wrapped him in bands of cloth, and laid him in a manger, because there was no room for them in the inn.'* Luke 2:7

In the Christmas story, we are made acutely aware that there was no room for Joseph and Mary to rest when they arrived in Bethlehem, in the more traditional places reserved for hospitality in Jewish culture. This meant they had to use other spaces which were available.

Jesus' birth changed everything and made room for us in God's Kingdom. As part of the Methodist Church, we seek to demonstrate our open, inclusive and welcoming nature by saying to all people, 'There is Room' for you.

